

Hydrograph Exercise - Wombeyan Creek

Supplied:

- Location map - hydrograph sites and details of the Left Bank Drainage at Wombeyan Ck.
- Rainfall chart - 1989
- Hydrograph charts, 1989, for Wombeyan Ck, Grants Cave and Junction Cave.

Background

The charts are from the study by Tod Dennis, completed in 1993 - a copy of his unpublished report is held at the office at Wombeyan caves. Tod set up recording stations at a number of surface and subsurface sites. We will look at the results from Wombeyan Creek (under the bridge to the power house) and in Grants cave and Junction Cave. See location map.

Both Grants and Junction Cave receive water from Victoria Arch, but via different routes (water tracing). They may also receive additional water from other sources.

To Do.

- Note the rainfall and discharge curves for Wombeyan creek
- Compare the discharge patterns for the streams in Grants Cave and Junction Cave with each other, and with Wombeyan Creek.
- Explain the different discharge patterns between Grants and Junction Caves.
- What do these patterns suggest about the Inputs, Flow and Storage in these two systems?

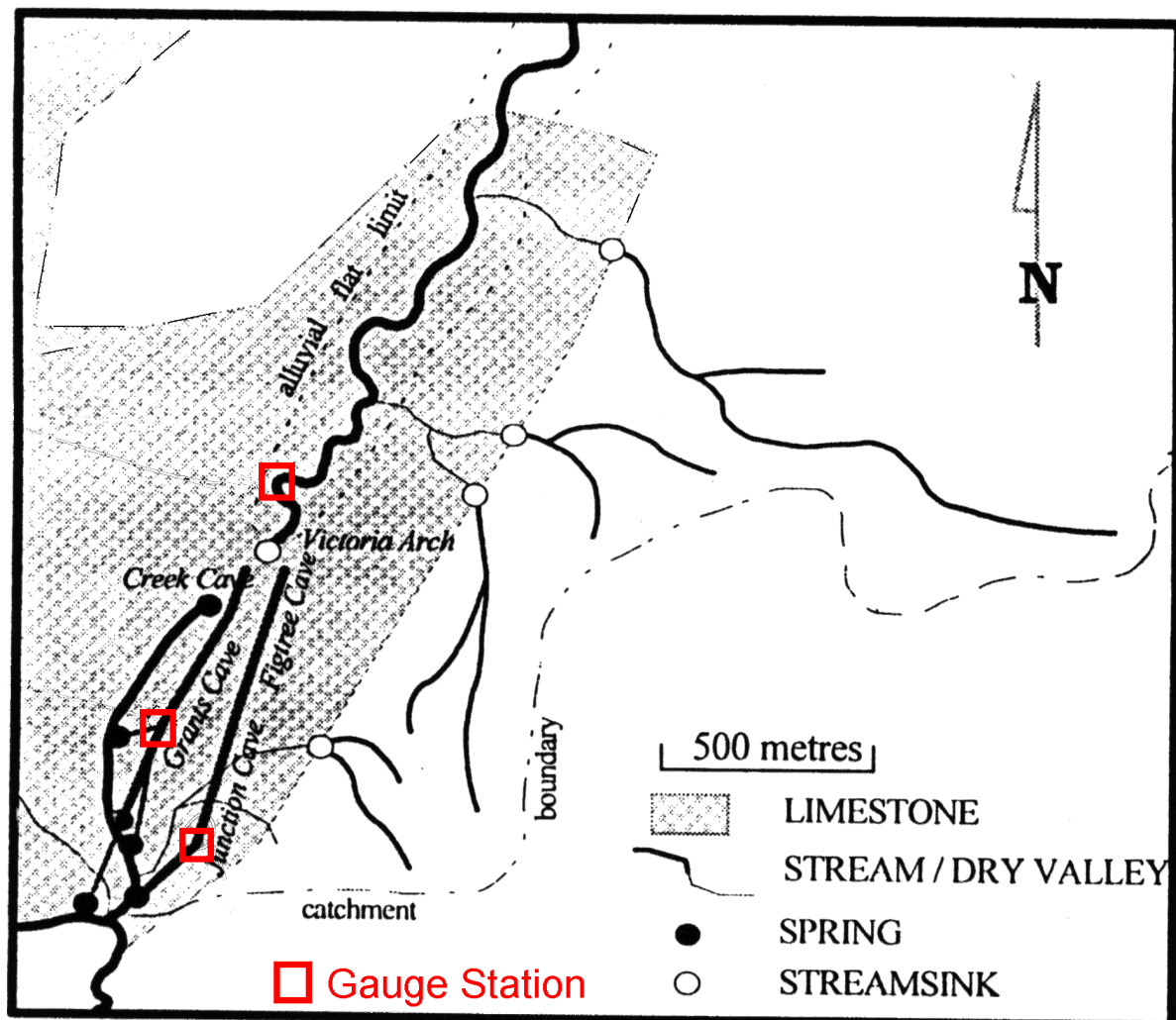
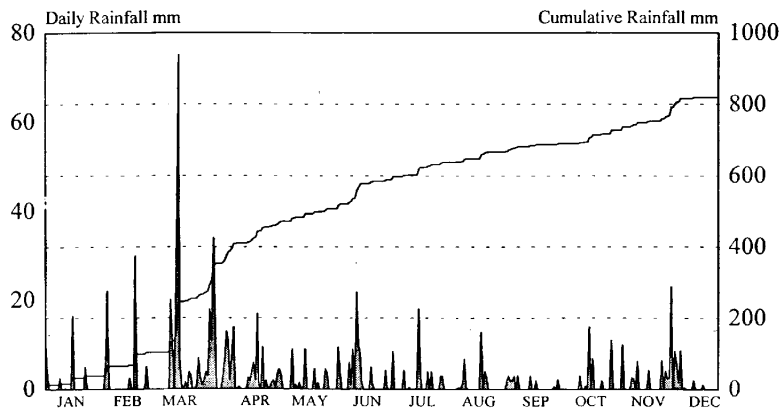
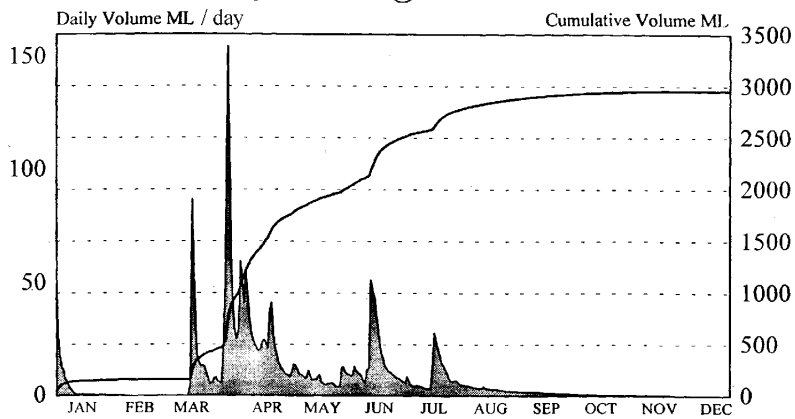


Figure 4.4 Details of the Left Bank Drainage Complex

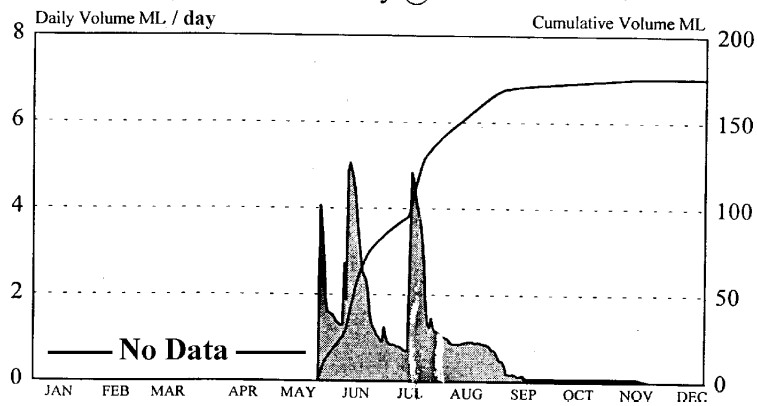
Wombeyan Rainfall @ 000001 1989



Wombeyan Creek @ 000011 1989



Grants Cave Streamway @ 000014 1989



Junction Cave Streamway @ 000013 1989

